

VENEERS

IPS EMPRESS® I, IPS EMPRESS® II

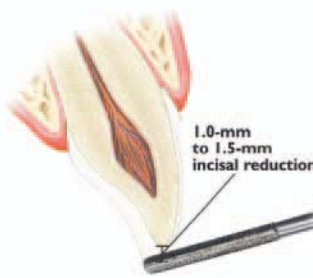
UNIFORM FACIAL PREPARATION

A medium grit, round-ended, diamond bur is used to remove a uniform thickness of facial enamel by joining the depth-cut grooves.



INCISAL PREPARATION

The diamond bur is angled to bevel back the incisal edge.



CHAMFER MARGINS

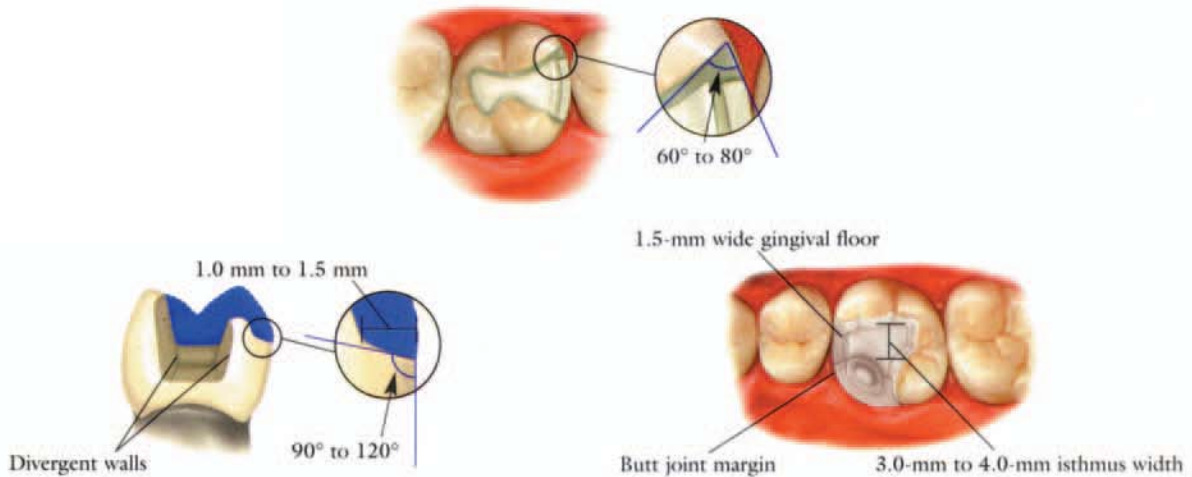
Correct preparation of the chamfer margins interproximally allows the appropriate bulk of porcelain.



*Please note: For additional masking capabilities and/or layering techniques, further reduction may be necessary. Contact your laboratory for further information.

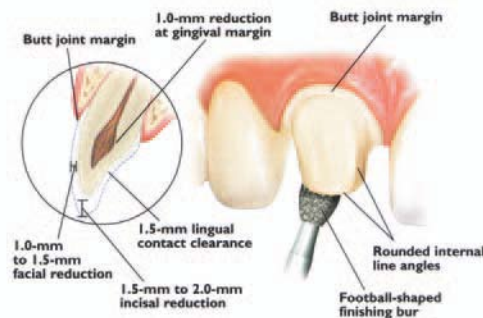
INLAYS/ONLAYS

IPS EMPRESS® I, IPS EMPRESS® II



ANTERIOR CROWNS

IPS EMPRESS® I, IPS EMPRESS® II

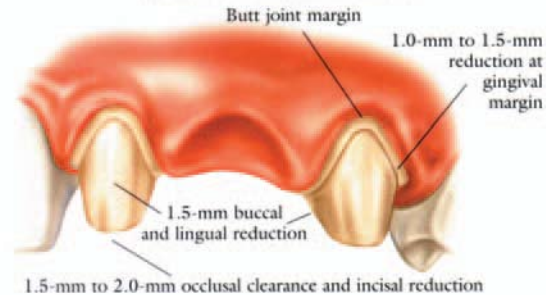


All prepared surfaces must be rounded on all metal-free restorations.

ANTERIOR BRIDGES

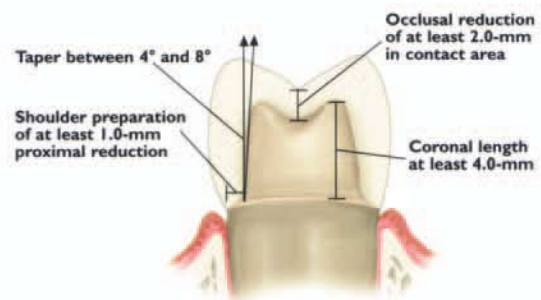
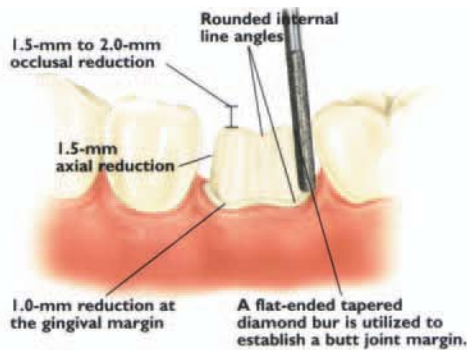
IPS EMPRESS® II

Note: Bridge connectors must be a minimum of 4.0 mm × 4.0 mm (16-mm sq.)



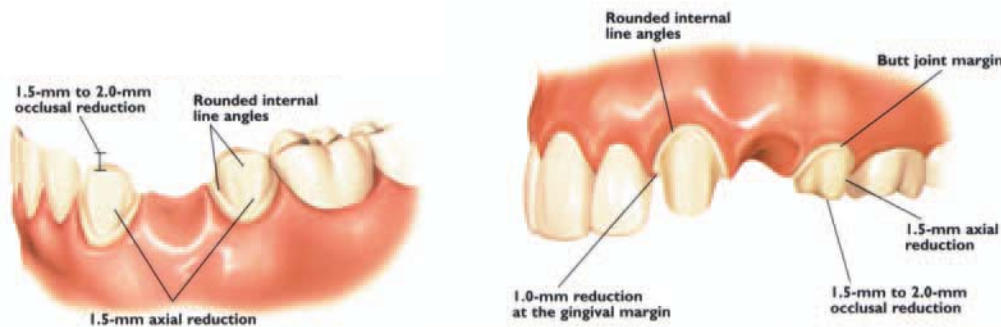
POSTERIOR CROWNS

IPS EMPRESS® I, IPS EMPRESS® II



POSTERIOR BRIDGES

IPS EMPRESS® II



All prepared surfaces must be rounded on all metal-free restorations.